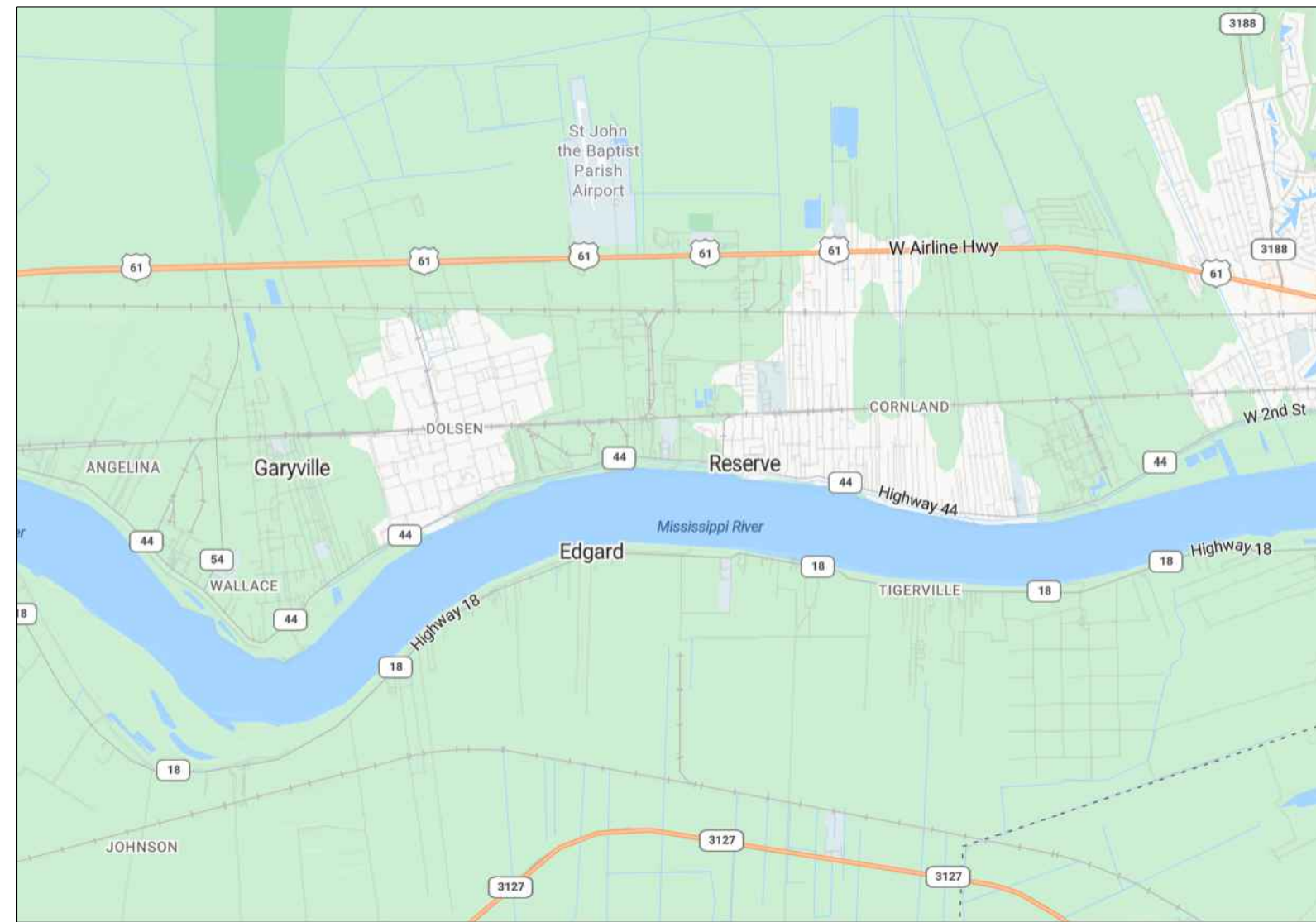


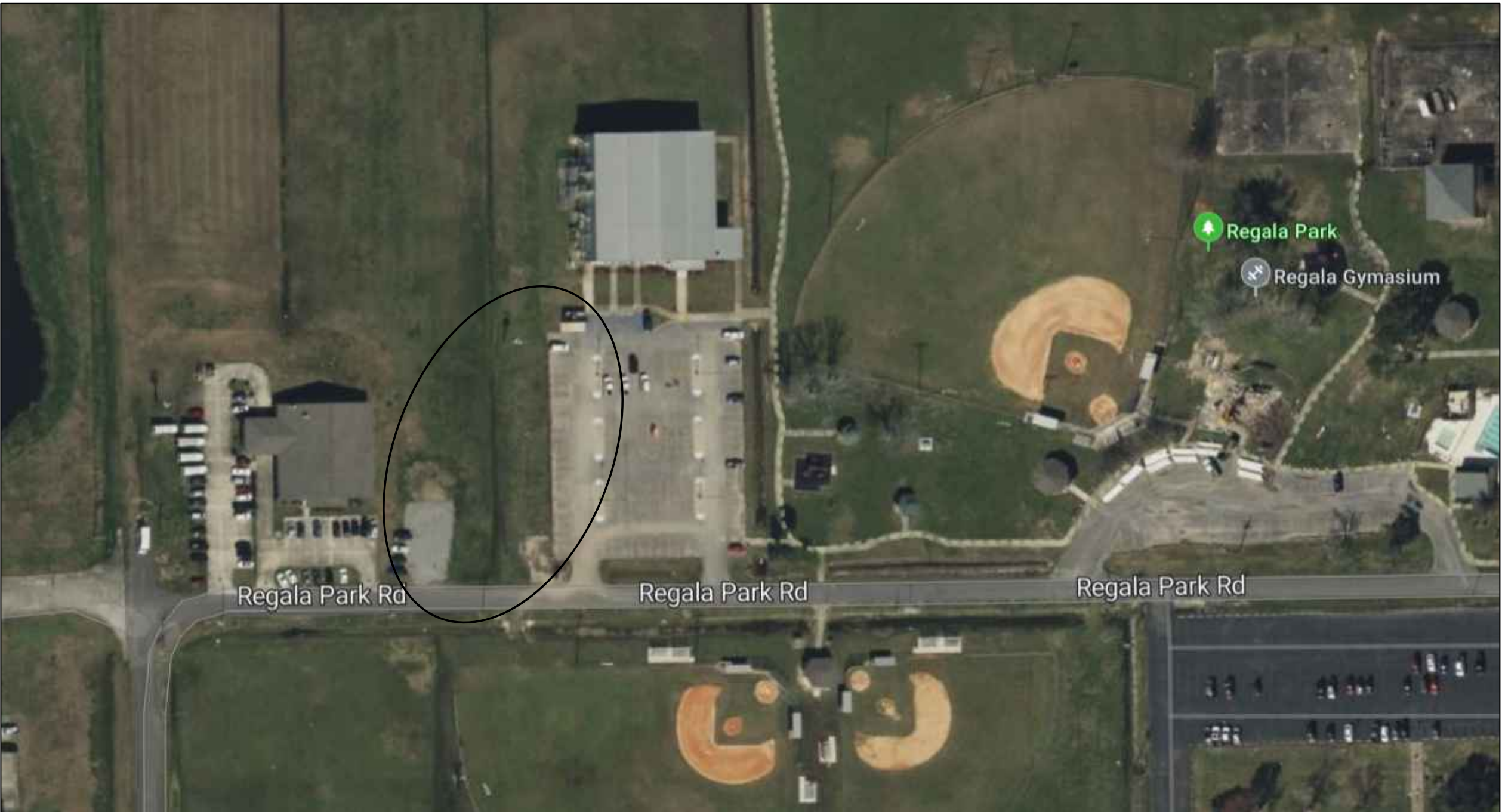
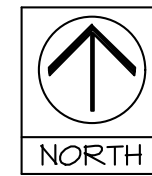
SHEET INDEX	
#	SHEET TITLE
1	TITLE SHEET
2	GENERAL NOTES AND LEGEND
3	SURVEY
4	EXISTING SITE PLAN
5	PARKING LOT PLAN
6	MISCELLANEOUS DETAILS

# REGALA PARK DRAINAGE AND PARKING LOT

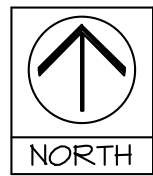
ST. JOHN THE BAPTIST PARISH, LOUISIANA  
A/E PROJECT NO. 24-1130-0034



LOCATION MAP



VICINITY MAP



**ST. JOHN THE BAPTIST PARISH**  
 JACLYN HOTARD - PARISH PRESIDENT  
 PETER MONTZ - CHIEF ADMINISTRATIVE OFFICER

**COUNCIL MEMBERS**

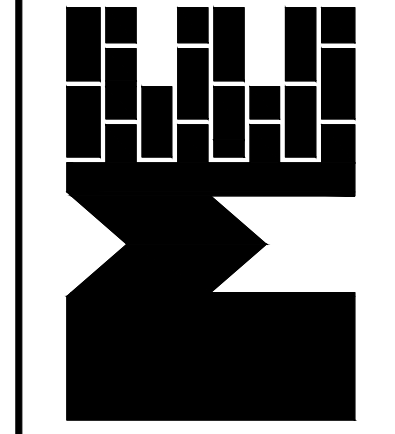
- LENNIX MADERE JR, DIVISION A COUNCILMAN
- MICHAEL P. WRIGHT, DIVISION B COUNCILMAN
- VIRGIE JARROW JOHNSON, DISTRICT 1 COUNCILWOMAN
- WARREN "BOSCO" TORRES, DISTRICT 2 COUNCILMAN
- TAMMY HOUSTON, DISTRICT 3 COUNCILWOMAN
- TYRA DUHE-GRIFFIN, DISTRICT 4 COUNCILWOMAN
- ROBERT ARCURI, DISTRICT 5 COUNCILMAN
- VERNON BAILEY SR, DISTRICT 6 COUNCILMAN
- DIXIE RAMIREZ, DISTRICT 7 COUNCILWOMAN

project no. 24-1130-0034  
 drawn MAS  
 checked DPD  
 date 10/22/2024  
 revised



**Meyer Engineers, Ltd.**  
 A Thompson Holdings Company  
 4937 Hearst Street | Suite 1B  
 Metairie, Louisiana 70001  
 504.885.9892 (o)  
 www.meyer-el.com

**meyer**  
 ENGINEERS + ARCHITECTS



TITLE SHEET  
 REGALA PARK DRAINAGE AND PARKING LOT  
 REGALA PARK  
 ST. JOHN THE BAPTIST PARISH, OWNER

sheet no.  
**1**  
 of \_\_\_\_\_ sheets



**NOTES:**

- 1) THE FIELD SURVEY WAS COMPLETED AUGUST 14, 2024.
- 2) NO ATTEMPT HAS BEEN MADE BY CYPRESS SURVEYING & CONSULTING, LLC TO VERIFY TITLE, ACTUAL LEGAL OWNERSHIP, SERVITUDES, EASEMENTS, RIGHTS OF WAY OR OTHER BURDENS ON THE PROPERTY OTHER THAN THAT FURNISHED BY THE OWNER OR THE OWNERS REPRESENTATIVE.
- 3) THE LOCATION OF FOUND ABOVE GROUND UTILITY FEATURES HAVE BEEN SHOWN HERE ON. NO ATTEMPT HAS BEEN MADE TO LOCATE UNDERGROUND UTILITIES AND THEIR ACTUAL LOCATION MAY VARY FROM THOSE DEPICTED ON THIS SURVEY. ANY REQUEST FOR UTILITY LOCATIONS SHOULD BE MADE THROUGH LOUISIANA ONE CALL, CONTACT LOUISIANA ONE CALL AT 1-800-272-3020 BEFORE DIGGING.
- 4) THE SUBJECT PROPERTY AS SHOWN HEREON LIES WITHIN ZONE "AE" (EL: 3) AS SAID PROPERTY PLOTS BY SCALE ON THE EFFECTIVE FLOOD INSURANCE RATE MAP (FIRM) FOR ST. JOHN THE BAPTIST PARISH, LOUISIANA, COMMUNITY/PANEL NUMBER: 220164/0205 D MAP NUMBER 22095C0205D, DATED NOVEMBER 4, 2010.
- 5) FLOOD ZONE LINES DEPICTED ON THIS SURVEY WERE SCALED FROM ABOVE MENTIONED FIRM AND ARE FOR INFORMATIONAL PURPOSES ONLY.
- 6) BASE FLOOD ELEVATIONS ARE SUBJECT TO CHANGE AND THE CURRENT BASE FLOOD ELEVATION SHOULD BE VERIFIED WITH THE ENGINEERING DIVISION OF THE DEPARTMENT OF PUBLIC WORKS.
- 7) DELINEATION OF JURISDICTIONAL WETLANDS HAS NOT BEEN REQUESTED NOR IS A PART OF THIS SURVEY.
- 8.) SECTION LINES SHOWN HEREON WERE NOT SURVEYED ON THE GROUND ARE FOR INFORMATIONAL PURPOSES ONLY.

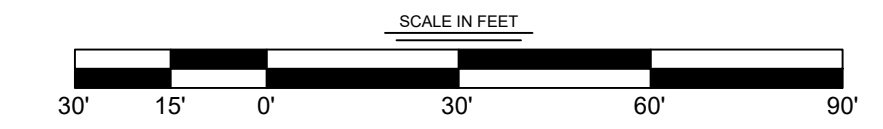
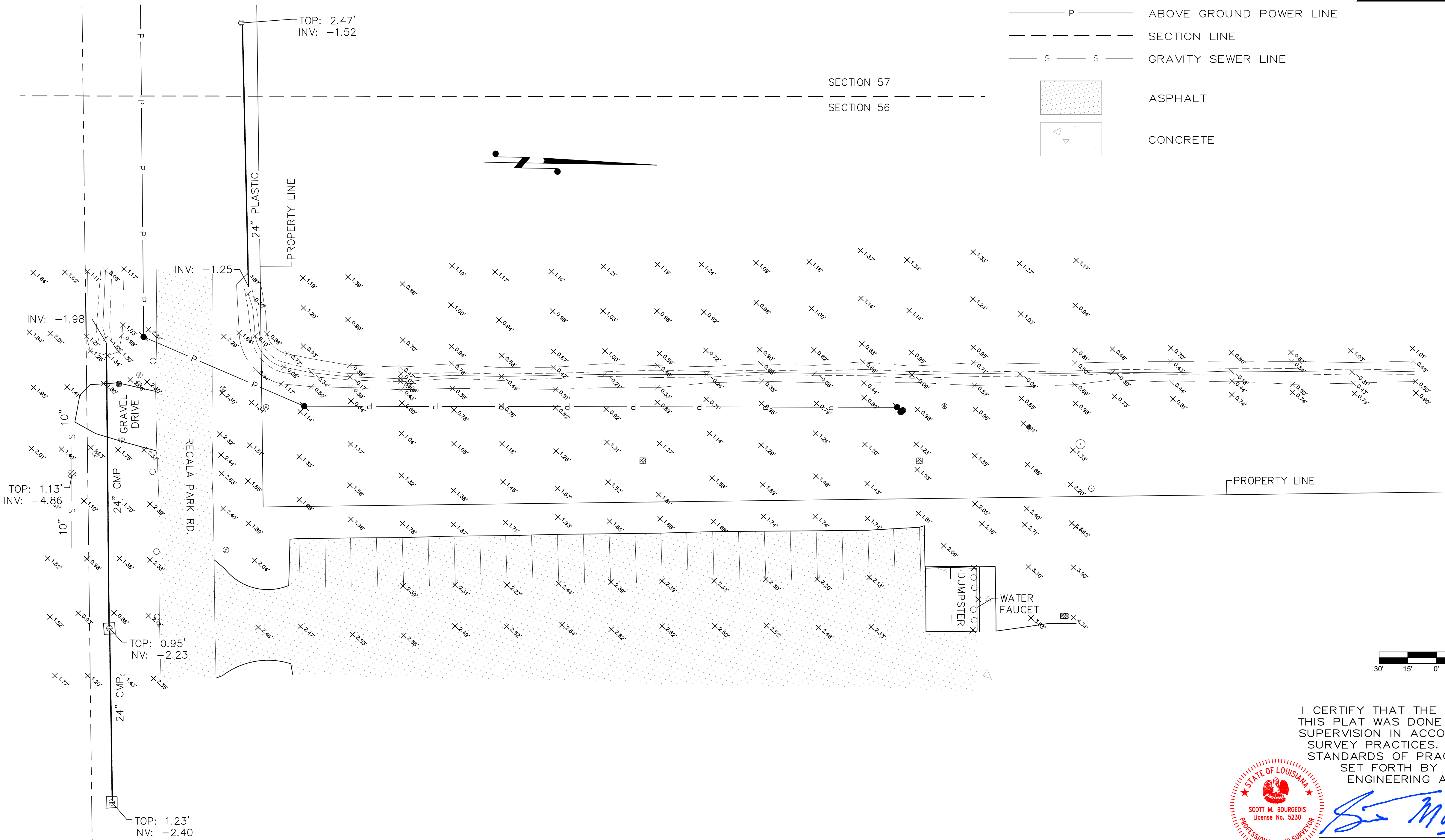
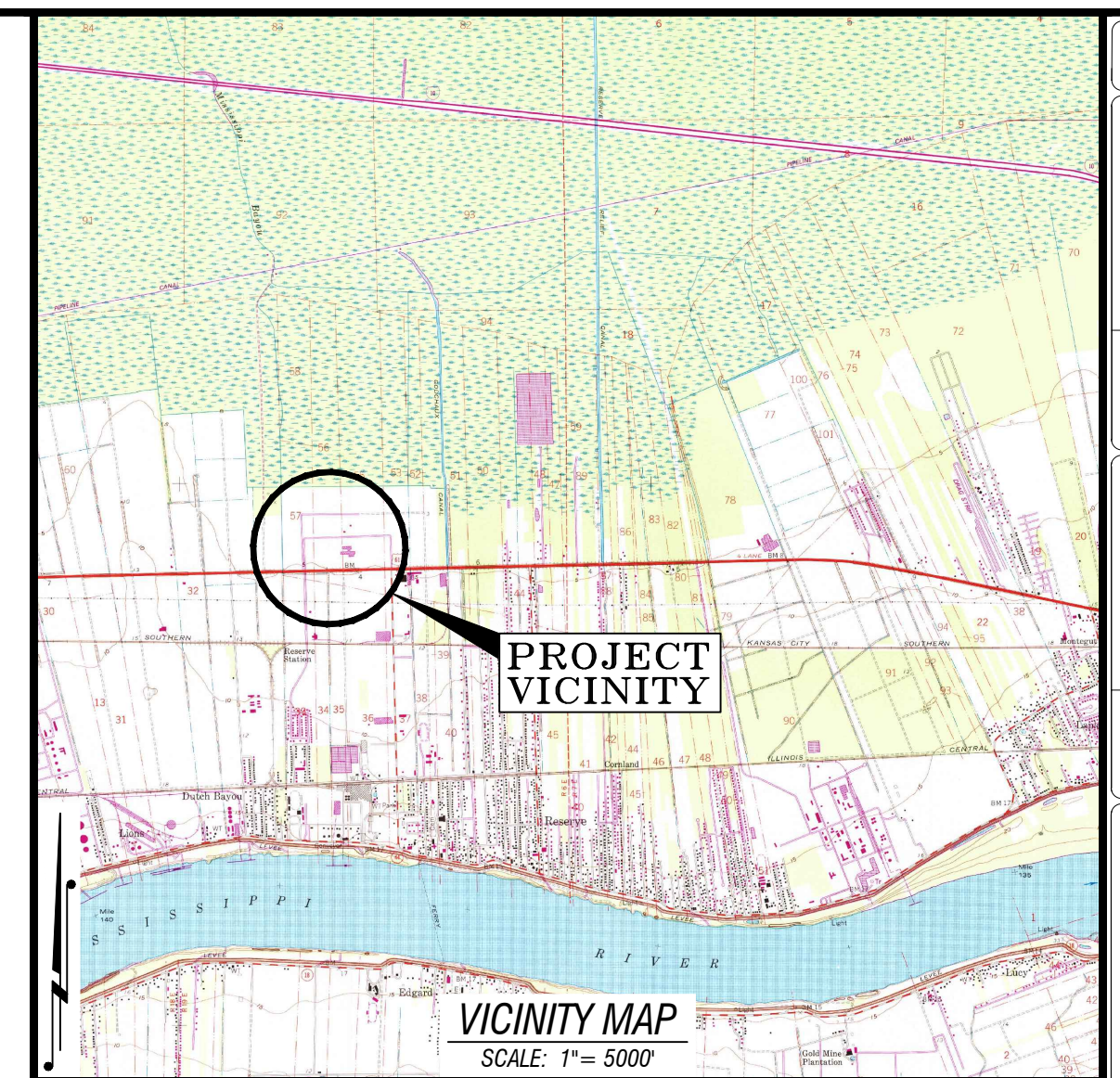
ST. JOHN THE BAPTIST PARISH, LOUISIANA  
 SECTIONS 56, T11S - R6E  
 SOUTHEASTERN LAND DISTRICT  
 EAST OF THE MISSISSIPPI RIVER

**REFERENCE DOCUMENTS:**

- 1) SURVEY PLAT BY HAROLD J. FLYNN, DATED JANUARY 16, 1977 AND REVISED JANUARY 31, 1977 AND RECORDED UNDER INSTRUMENT NUMBER 56582 IN THE ST. JOHN THE BAPTIST PARISH CLERK OF COURT'S RECORDS.
- 2) SURVEY PLAT TITLED "SURVEY PLAT & ADMINISTRATIVE RESUBDIVISION OF LOT X AND AN UNDESIGNATED PORTION OF BLOCK 10A OR AIRPORT INDUSTRIAL PARK SUBDIVISION INTO LOTS WA AND BLOCK 10A-X OF AIRPORT INDUSTRIAL PARK SUBDIVISION RESERVE, ST. JOHN THE BAPTIST PARISH, LOUISIANA" BY RIVERLANDS SURVEYING COMPANY AND DATED APRIL 14, 2005.

**LEGEND:**

- POWER POLE
- LIGHT POLE
- POWER POLE ANCHOR
- SIGN POLE
- TEMPORARY BENCH MARK
- TELEPHONE PEDESTAL
- WATER METER
- BOLLARD
- WATER VALVE
- FIRE HYDRANT
- CATCH BASIN
- SEWER MANHOLE
- TREE
- METAL FENCE
- ABOVE GROUND POWER LINE
- SECTION LINE
- GRAVITY SEWER LINE
- ASPHALT
- CONCRETE



I CERTIFY THAT THE TOPOGRAPHIC SURVEY DEPICTED ON THIS PLAT WAS DONE ON THE GROUND UNDER MY DIRECT SUPERVISION IN ACCORDANCE WITH GENERALLY ACCEPTED SURVEY PRACTICES. THIS SURVEY DOES NOT MEET THE STANDARDS OF PRACTICE FOR BOUNDARY SURVEYS AS SET FORTH BY THE LOUISIANA PROFESSIONAL ENGINEERING AND LAND SURVEYING BOARD.



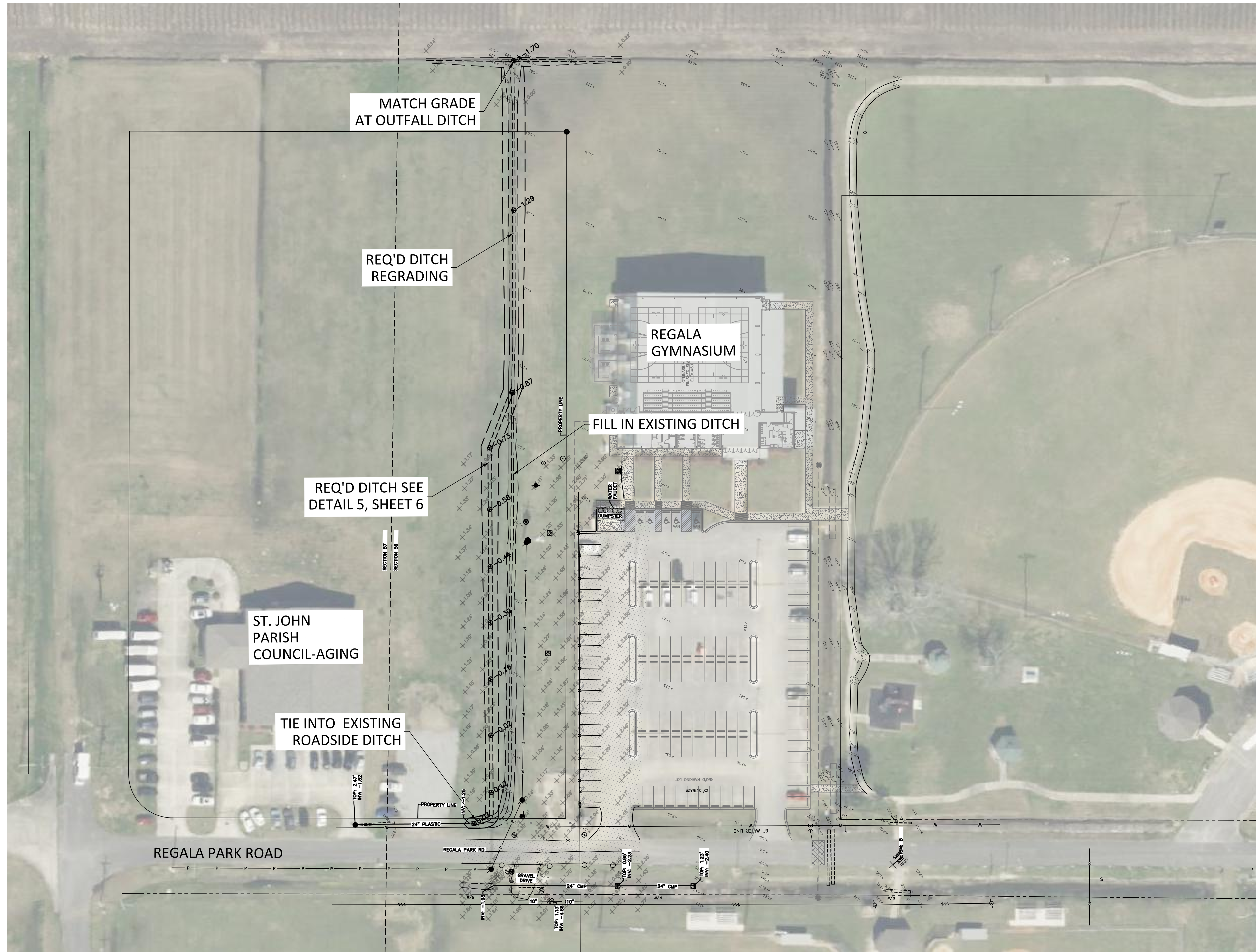
*Scott M. Bourgeois*  
 SCOTT M. BOURGEOIS, P.L.S. LA 5230  
 08-21-2024  
 DATE

SHEET NUMBER	1 OF 1
ST. JOHN THE BAPTIST PARISH	CSC PROJECT 24021
DESIGN CHECK	DATE AUGUST 21, 2024
DETAIL CHECK	DATE
NO.	DATE
REVISION OR CHANGE ORDER DESCRIPTION	BY

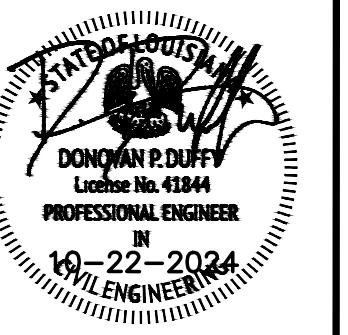
ST. JOHN THE BAPTIST PARISH MAP SHOWING TOPOGRAPHIC SURVEY FOR THE REGALA PARK PARKING LOT SECTIONS 56, T-11-S, R-6-E ST. JOHN THE BAPTIST PARISH, LOUISIANA

ST. JOHN THE BAPTIST PARISH GOVERNMENT

**CYPRESS SURVEYING & CONSULTING, LLC**  
 225-717-6267  
 P.O. BOX 1222 VACHERIE LA, 70090

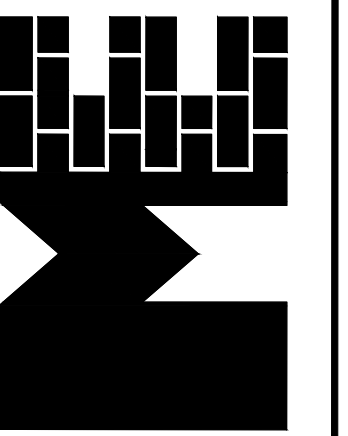


project no. 24-1130-0034  
 drawn MAS  
 checked DPD  
 date 10/22/2024  
 revised



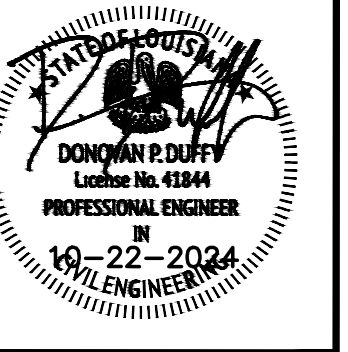
Meyer Engineers, Ltd.  
 A Thompson Holdings Company  
 4937 Hearst Street | Suite 1B  
 Metairie, Louisiana 70001  
 504.885.9892 (o)  
 www.meyer-etl.com

**meyer**  
 ENGINEERS + ARCHITECTS



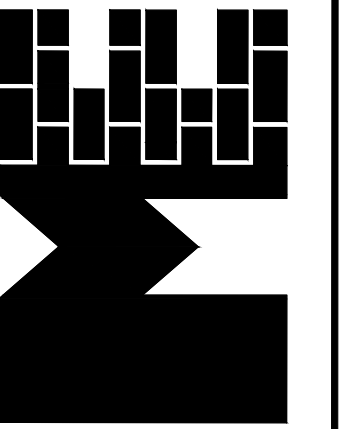
EXISTING SITE PLAN  
 REGALA PARK DRAINAGE AND PARKING LOT  
 REGALA PARK  
 ST. JOHN THE BAPTIST PARISH, OWNER

sheet no.  
 4  
 of \_\_\_ sheets

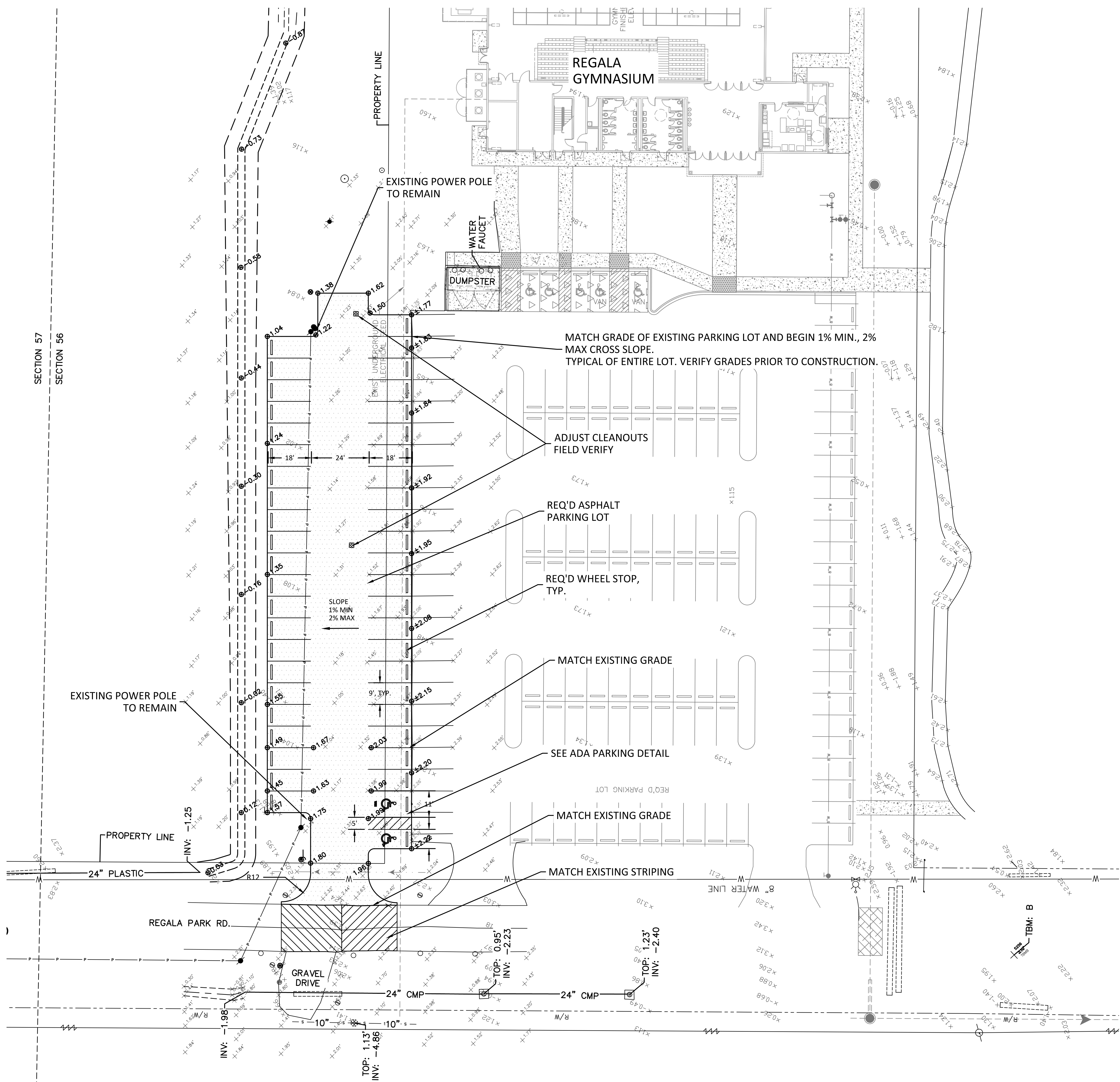


Meyer Engineers, Ltd.  
 A Thompson Holdings Company  
 4937 Hearst Street | Suite 1B  
 Metairie, Louisiana 70001  
 504.885.9892 (o)  
 www.meyer-ei.com

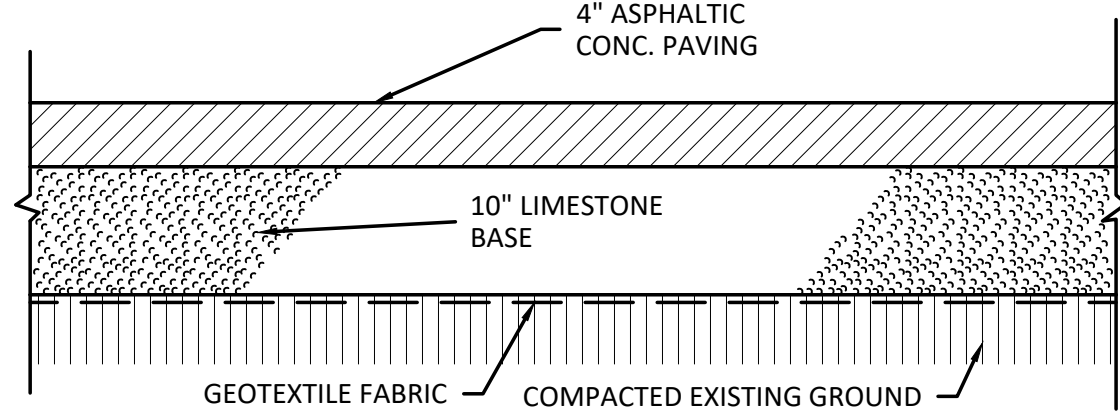
**meyer**  
 ENGINEERS + ARCHITECTS



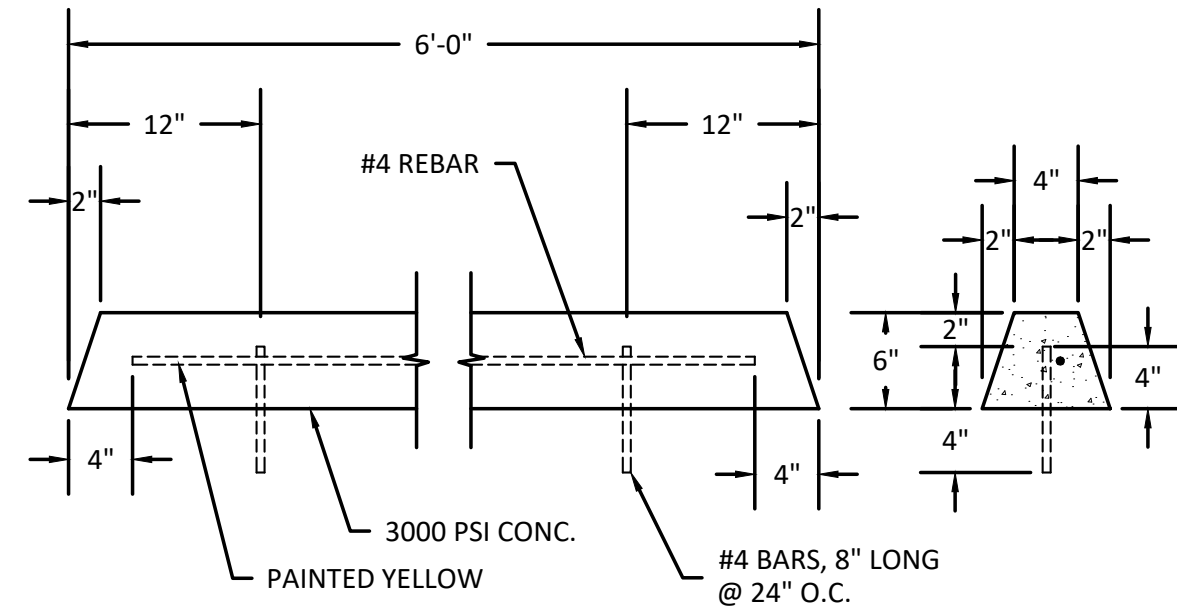
PARKING LOT PLAN  
 REGALA PARK DRAINAGE AND PARKING LOT  
 REGALA PARK  
 ST. JOHN THE BAPTIST PARISH, OWNER



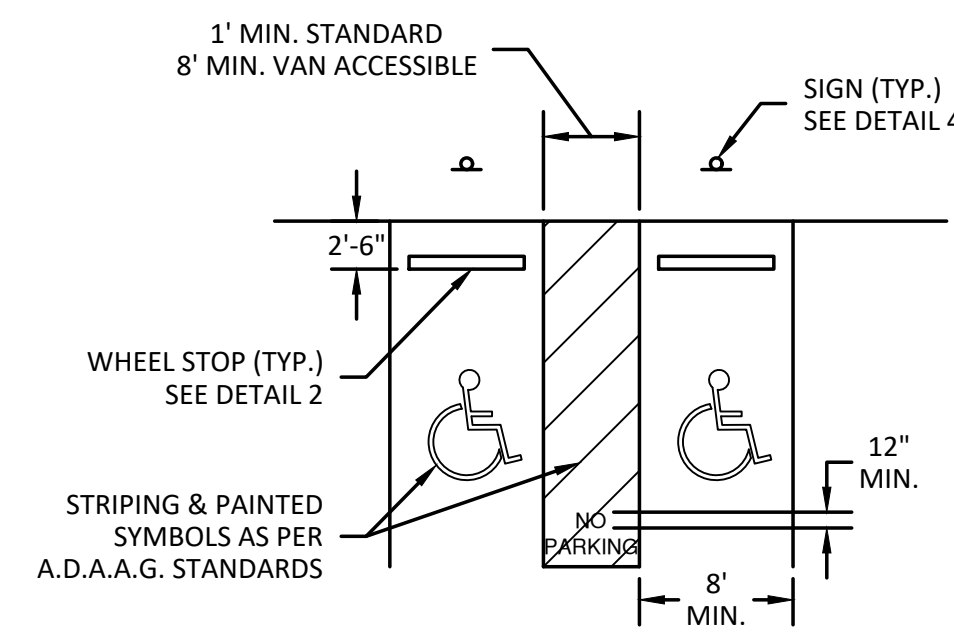
ITEM	QUANTITY
EXISTING PARKING SPOTS	125
PROPOSED PARKING SPOTS	46
TOTAL PARKING SPOTS	171



1 ASPHALT PARKING LOT SECTION  
5 | 6 1" = 1'-0"

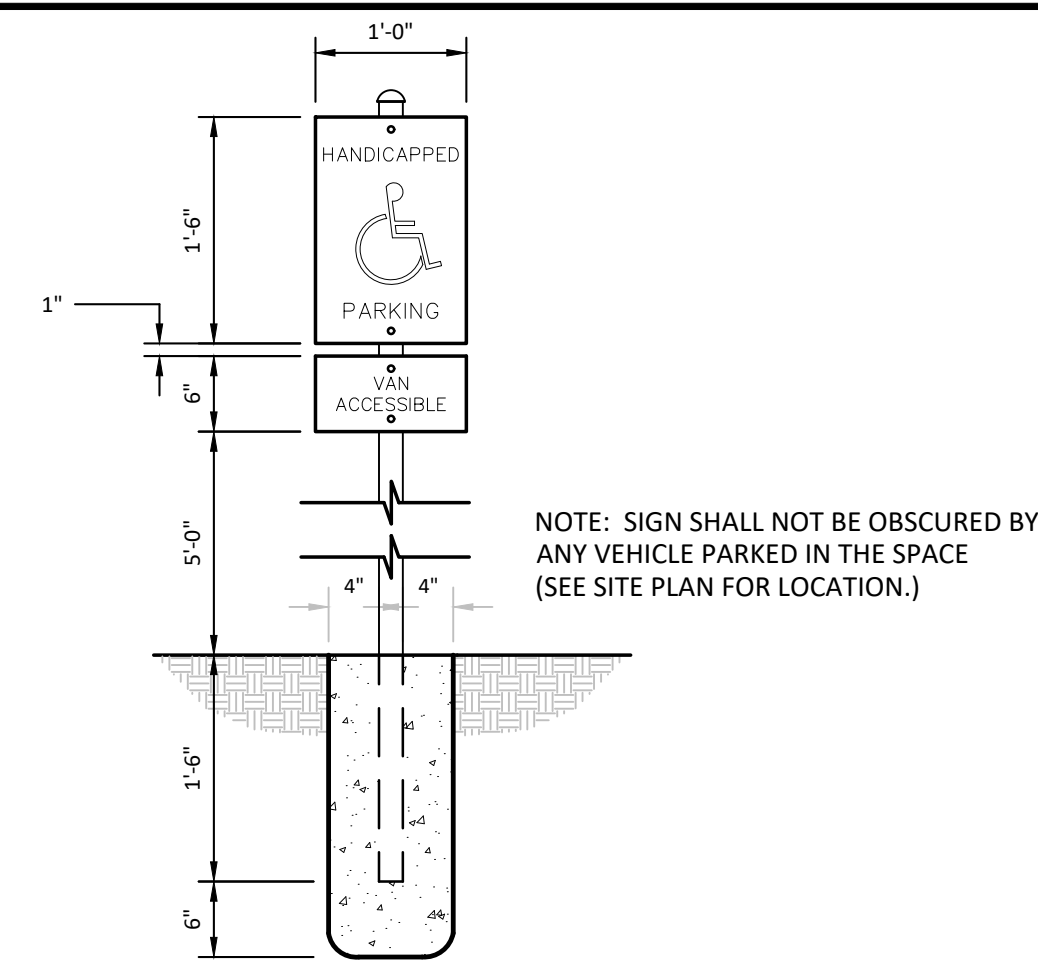


2 WHEEL STOP  
5 | 6 1" = 1'-0"



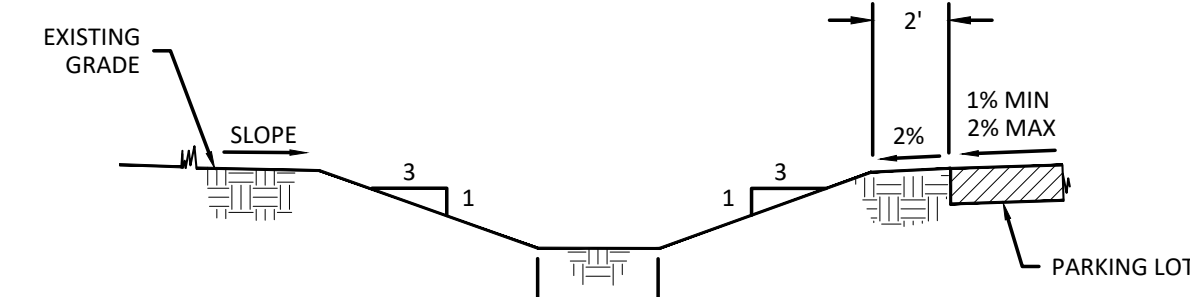
NOTE:  
1. SEE SITE PLAN FOR ACTUAL PARKING SPACE SIZES, LOCATION OF STANDARD & VAN ACCESSIBLE SPACES & ADJACENT ACCESSIBLE ROUTES  
2. "NO PARKING" TEXT SHALL BE DISTINCTIVE IN COLOR (WHITE/YELLOW) AND SHALL BE SUPERIMPOSED OVER ACCESSIBLE AISLE STRIPING.

3 ADA ACCESSIBLE PARKING SPACE  
5 | 6 1" = 10'



NOTE: SIGN SHALL NOT BE OBLSCURED BY ANY VEHICLE PARKED IN THE SPACE (SEE SITE PLAN FOR LOCATION.)

4 ADAAG PARKING SIGN  
5 | 6 N.T.S.

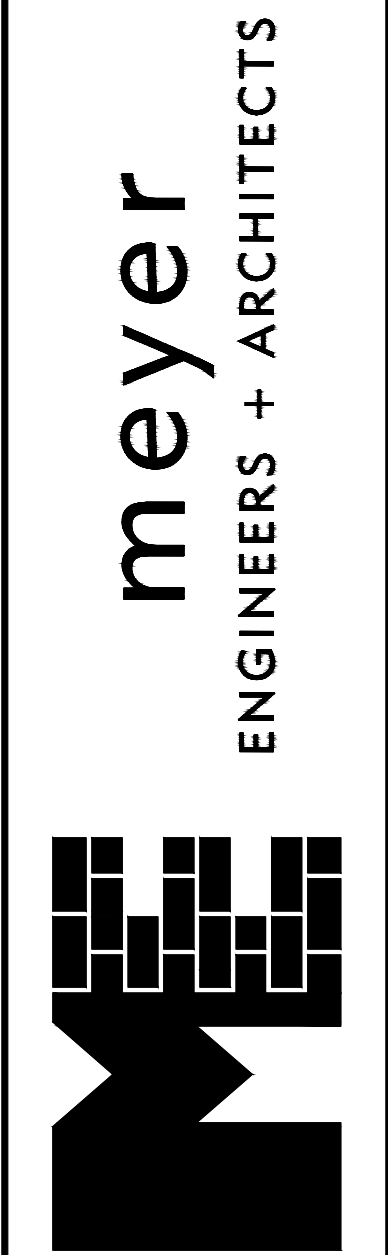


5 TYPICAL DITCH SECTION  
5 | 6 N.T.S.

project no. 24-1130-0034  
drawn MAS  
checked DPD  
date 10/22/2024  
revised



Meyer Engineers, Ltd.  
A Thompson Holdings Company  
4937 Hearst Street | Suite 1B  
Metairie, Louisiana 70001  
504.885.9892 (o)  
www.meyer-el.com



MISCELLANEOUS DETAILS  
REGALA PARK DRAINAGE AND PARKING LOT  
REGALA PARK  
ST. JOHN THE BAPTIST PARISH, OWNER

sheet no.  
6  
of \_\_\_ sheets